

GLIMPSES OF YESTERDAY

The Northeast Voice

In this issue:

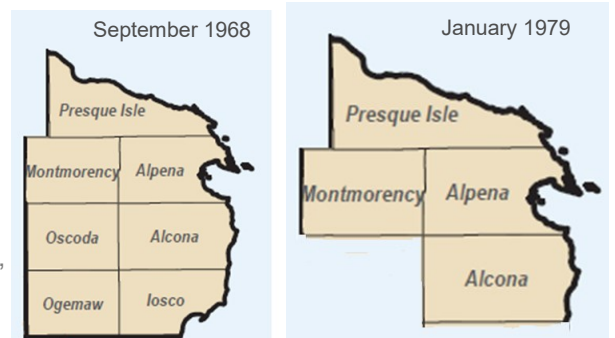
- Purpose of this edition
- Historical Q & A
- Program Histories
- Residential Programs
- Can you Guess who these employees are?

Purpose of this edition

The purpose of this edition is to celebrate the birthday of this Agency. The first board meeting of this Agency was held on September 26, 1968 (53 years ago). Many changes have occurred during those years. Hopefully, this newsletter will provide some history to staff and possibly some flashback memories for our tenured staff.

Q: What was the Agency's first name?

A: Northeast Michigan Community Mental Health (PA 54), later consolidated agencies and was named Northeast Michigan Community Mental Health Services. The original Board was administrative only and contracted for needed services. It was a seven-county region consisting of Alpena, Alcona, Iosco, Ogemaw, Oscoda, Montmorency and Presque Isle Counties. In September 1976, Iosco and Ogemaw counties resign and become AuSable Valley CMH with Oscoda county following in January 1979.



Q: Who was the first director?

A: Fred Schaedig was employed as the first Business Manager. Soon after, the Board began discussions to change from an administrative only board to direct operations and they hired Warren Fritz as Director. Mr. Fritz came back to visit our Agency when Ed LaFramboise was Director.



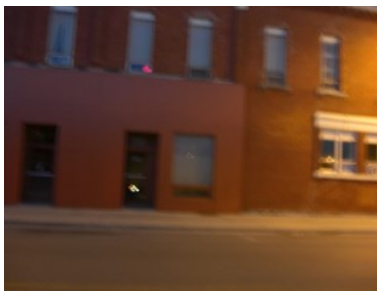
Warren Fritz
1972—1974

Q. Where were the early offices located?

The first location was some shared office space in the old Poor Farm Building, which is now part of the Annex at MidMichigan Medical Center—Alpena. The second location was 106 Water St..



First official office — shared space with the Mental Health Centers in the old Poor Farm Building



106 Water Street
Administrative Offices—1973



630 Walnut—November 1974

Q. What other locations in Alpena did the Agency operate from?

In November 1974 the offices moved to 630 Walnut St. location, the former Catholic Central Convent. In 1987, the Board leased office space at 113 State Ave for several administrative staff. In June 1990, the Johnson Street building was ready for move in. The administrative office from State Street and the business/clinical offices from 630 Walnut moved. The ACT program moved in to the vacated office space on State Street from their Chisholm Street location.

Right: 1987 space leased for Administrative Offices until new building is complete—
113 State Avenue



400 Johnson Street
June 1990



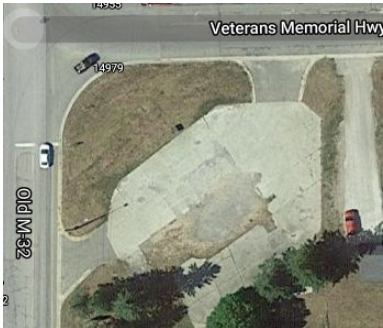
April 2012—Fletcher Street Annex

Q. What locations in Presque Isle County did the Agency operate from?

In 1980, the Agency developed a satellite office in Rogers City sharing secretarial time with Dr. James Ryan. In 1983, the Agency leased from Alpena Oil Company a location for five years before settling in the third location (the old Gatzke building) and then our final location today.



Top Above: Dr. Ryan's shared office
 Far Left: Alpena Oil Co leased office
 Middle: Old Gatzke building
 Left: Current office location 156 N Fourth



Q. What locations in Montmorency did the Agency operate from?

The initial office space was located at One Village Corner in Hillman. The graphic only depicts the footprint of the building as the original building was demolished. Hillman office space was also located in the old Wenzel Building [now the location of Widell Industries] where the Day Program was located until the construction of the current location at 603 Caring Street.

Top Left: Footprint of One Village Corner—Hillman's first office
 Top Right: Current Hillman office at 630 Caring Street
 Above: Old Wenzel Bldg—Location for Day Program / Hillman ofc
 Below Left: Lake St, Harrisville Office
 Below Right: Lincoln site—Alcona Health Center

Q. What locations in Alcona County did the Agency operate from?

In 1981, a satellite office was opened in Alcona County located inside the Alcona Medical Clinic in Lincoln. At this point, the Agency shared the clinic's clerical support services, paying \$250/month for leased space and \$375/month for clerical services. Later the Agency moved to the location on Lake Street in Harrisville through a lease arrangement with District Health Department #4. The clinical services were returned to Lincoln through a lease arrangement with Alcona Citizens for Health for office space within the Alcona Health Center.



AGENCY DIRECTORS

05/19/69—Fred Schaedig was Business Manager of the Agency.

01/30/1972—Warren Fritz was hired as the Administrative Assistant. This was still at a time when the Board was an administrative Board only; contracting for all services. Mr. Fritz was to focus on delivering direct service versus contracting for services. Mr. Fritz submitted his resignation effective February 1, 1974. He later visited our office during Ed LaFramboise's directorship and provided the Agency with this picture.



Warren Fritz

1972—1974



01/20/1974—David Lindenmulder PhD was hired as Director upon Warren Fritz's resignation. Director Lindenmulder submitted letter of resignation to the Board effective September 30, 1976.

07/01/1975—The operation of the Mental Health Centers officially transferred to direct operation under this Agency.

09/30/1976 Board appointed Paul VanderSchie acting Director effective October 1, 1976. Mr. VanderSchie was hired by the Agency on July 6, 1976 as the MI Division Director and served in that position until he was appointed acting Director. The Board took action in December 1976 to waive the process for Director search and awarded Mr. VanderSchie the Director position with a probation period beginning the date he was appointed acting Director.

David Lindenmulder
1974—1976



Charles "Tony" White
1985—09/2012

Charles "Tony" White was hired by the Agency in December 1974 through the CETA program as a psychiatric aide. In October 1975, the CETA position was made a regular position within the organization. Tony took a short leave to finish his education in 1976. On March 16, 1978 he was appointed to the position of Program Analyst. In June 1979, he also filled the position of Recipient Rights Officer for a short period of time. He was later appointed to Assistant Director on October 1, 1980. On March 14, 1985, Mr. White was appointed Acting Director with the resignation of Paul VanderSchie. He was made the Director on November 14, 1985. He remained in this position until the time of his retirement on September 30, 2012.



Paul VanderSchie

10/1976—1985



Cathy Meske
07/2016—06/2019

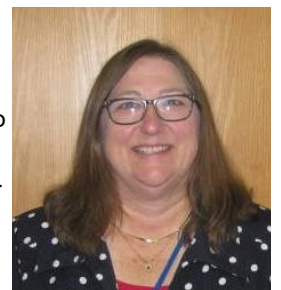
Edwin LaFramboise was hired as Director of Residential Services on February 25, 1980. At this point in time, the Agency was gearing up to develop at least 16 AIS homes. He served on the Independent Professional Review Team in the early 1980s to help in determining placement of the Plymouth Center residents. The Cambridge home was the first group home to open in our catchment area and opened on April 16, 1980. In June 2000, Mr. LaFramboise worked diligently to transition day program services to community based services and employment services. NEMROC, Lumberjack Enterprises and Evergreen Recycling were providers for the various integrated services. His position transitioned into that of DD Division Director. He was promoted to the Director position when Tony White retired, taking over effective October 1, 2012. He retired from this position June 30, 2016.



Ed LaFramboise

10/2012—06/2016

Cathy Meske was hired by the Agency on March 16, 1972 as an Activity Aide. Mr. Fritz was the Agency's Director at the time. August 4, 1975 she was promoted to the position of Altered Client Program Coordinator. In March 1980, she took a position with the Agency as a Case Manager for AIS. In July of that year she resigned to return to school. In 1982, Cathy completed an internship assigned to the Agency's Hillman Office. She came back into employment at the end of 1982 as an Outpatient Therapist MA for Montmorency County. She left the Agency for a brief time and worked as a Discharge Planner at Alpena General Hospital. Cathy was rehired as an Outpatient Therapist for Presque Isle County in May 1985. Cathy was promoted to ACT Supervisor for the ACT program in December 1988. Prior to her accepting the Director position in July 2016, Cathy held positions of Project Manager, MI Services Director and Director of Clinical & Support Services. Cathy retired from the Agency on July 1, 2019.



Nena Sork

07/2019—Present

Nena Sork was appointed to the Director position upon the retirement of Cathy Meske. Nena began her career with this Agency on December 5, 2008 as a CRS [Crisis Response Stabilization] Clinician. In May 2010, she was promoted to the Utilization Management Coordinator. She became the Chief Operating Officer in May 2019 and remained in that position until her appointment to the Director position on July 1, 2019.

OUR MEDICAL STAFF

[FROM INFO GLEANED FROM BOARD MINUTES, ETC.]

The Agency has been fortunate to have worked with several psychiatrists over time. The first psychiatrist was Ali Guner MD. He was an employee of the Mental Health Centers prior to the Centers merging with this Agency. He became an employee of this Board on May 20, 1980 and continued until September 5, 1980.



Ali Guner

Dr. Kunkel was hired as a contract psychiatrist to provide eight hours per week for the Tawas Clinic. [remember we were a seven-county agency at that time]

Aurora Genoves MD was appointed to Director of Psychiatric Services and stayed with the Agency from November 15, 1976 until June 10, 1978.

Seuk Im was hired on June 29, 1979 and stayed with the Agency until May 21, 1980.

Martin Abbert was hired April 14, 1980 and continued with the Agency through December 18, 1987.

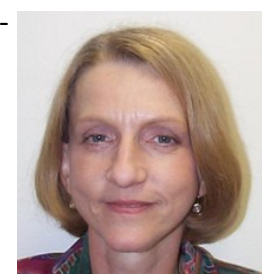


Hermann VonGreiff MD

Donald Michael MD was hired August 5, 1980 and stayed with the Agency until June 16, 1983. Dr. Michael left the Agency to take a position for a mental health clinic in Pennsylvania.

Herman VonGreiff was employed by the Agency from January 12, 1981 through November 30, 1982. Newer staff may remember him as he also provided services at the Behavioral Health Clinical at MidMichigan for a short period of time.

The Agency hired two psychiatrists in July 1983; Paul Rajasekhar MD and Carolyn Koppenol MD. Dr. Rajasekhar and Dr. Koppenol provided services for many years in various capacities; sometimes leaving the Agency for a short time or retiring and then coming back again. Dr. Koppenol left as Medical Director on November 15, 2009, coming back for a short stint as a contract psychiatrist (07/2011-04/2012), and then moved back to her hometown area to take a position at Pine Rest. Dr. Rajasekhar is currently our Medical Director through a contractual arrangement.



Carolyn Koppenol MD

Paul Rajasekhar MD Tariq Hassan MD was hired as a staff psychiatrist accepting the offer on July 12, 1984 and began his duties in October. He remained with the Agency until January 1986.

John Boaz, coming from Grosse Pointe, was hired as staff psychiatrist beginning November 14, 1988 and staying until December 15, 1989.

Joseph Wolodzko accepted a position as staff psychiatrist on May 2, 1988 and stayed with the Agency until June 9, 1989.

Robert Davidson MD came to this Agency from Arnell Engstrom Children's Center in Traverse City. He began employment with this Agency on April 1991. Dr. Davidson was appointed Medical Director January 9, 1992 and served in that position until April 2000 when he "semi-retired" to a more part-time position. He retired from here on March 2005.



Robert Davidson MD

OUR MEDICAL STAFF

[CONTINUED]

Dr. Jin Yun was hired as a Staff Psychiatrist on June 1, 1992. His prior service included Somerset State Hospital in Somerset, PA and the Newberry Regional Mental Health Center.



Oscar Barillas MD

Oscar Barillas began his career with Northeast on November 2, 1992. He came to this Agency from Las Vegas, Nevada. He began his career in Michigan at the Ypsilanti State Hospital and later as a staff psychiatrist at Clinton Valley Center in Pontiac. He was the psychiatric director at Macomb County Community Mental Health and psychiatric director of Berry Psychiatric Center in Mt. Clemens before moving to Las Vegas.

Gregg Miklashek MD joined the staff as staff psychiatrist in May 1993. He came here from Georgia where he was previously employed with Tidelands CMH for three years.



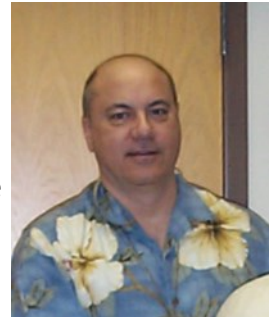
Steve Goad MD

Steven Goad MD was recruited and began his career on August 4, 1997. He stayed with the Agency until April 2003. Dr. Goad came to the Agency from Virginia after serving in Africa for six years where he was a linguistics consultant for Literacy & Evangelism Fellowship. During his time spent in Africa he took an interest in medicine and began his path to becoming a psychiatrist. He left the Agency in April 2003.



Monika Arora MD

Monika Arora MD was hired in October 2003 and worked until August 2004 when she took a break. She returned to the Agency as a contract psychiatrist in February 2012. In December 2014 she accepted the Medical Director position and stayed until February 2019.



Reno Liegghio MD

Nazzareno "Reno" Liegghio MD joined our Agency in November 2004 and continued in the staff psychiatrist role until September 2006.

Russell Williams DO provided psychiatric services from July 2005 to September 2008 and again from September 2010 to August 2011. Dr. Williams came to us fresh out of school and was the first psychiatrist we qualified for to help with loan repayment.



Russell Williams DO



Geetha Mohan MD

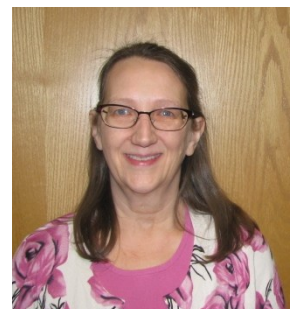
Geetha Mohan MD began her career at this Agency on October 1, 2012. She was here for just a brief period leaving February 11, 2013.

Anastasia Banicki-Hoffman began her career with the Agency in July 2018. Dr. Hoffman works out of the Rogers City office with the majority of her caseload focusing on children.



Anastasia Banicki-Hoffman MD

Lisa Spurlock was hired in February 2019. She works out of the Alpena office and is the doctor assigned to work with the ACT program.



Lisa Spurlock MD

In addition to the psychiatrists feature here, the Agency utilized many locum tenens over the years. There were many times when psychiatric services were needed and the use of locums was the only way to provide the services. At the height of service, this Agency employed five psychiatrists, either directly or through contract. The Agency now has the option to use PAs, nurse practitioners and other medical staff to provide services.

BOARD HISTORY

The first Board of Directors for the Agency as a seven-county Agency consisted of:

- Board Officers: Stuart Cohn, President (Alpena County)
 Lloyd Little, Vice President (Iosco County)
 Stanley Beck, Secretary (Alpena County)
 Charles Smith, Treasurer (Iosco County)

The first Board meeting after the consolidation of agencies consisted of:

- Board Officers: Stuart Cohn, Chair
 Hiram Rose, Vice Chair
 Mary Jane Burdett, Secretary
 James Drooger, Treasurer

The first act of business after consolidation was to adopt a Resolution to reorganize under Public Act 258. The Resolution was:

“NORTHEAST MICHIGAN COMMUNITY MENTAL HEALTH SERVICES BOARD has functioned under the enabling legislation of Public Act 254 of 1963 of the compiled laws of the State of Michigan as the public mental health authority for the counties of Alcona, Alpena, Iosco, Montmorency, Ogemaw, Oscoda and Presque Isle.

“WHEREAS Public Act 54 is repealed by Public Act 258 of 1974, laws of the State of Michigan, and;

“WHEREAS all the aforementioned counties who compiled the Board under Public Act 54, laws of the State of Michigan, and;

“WHEREAS THE Public Act 54 Board has acted in good faith during its tenure, and;

“WHEREAS the Public Act 54 Board has assets and liabilities currently under their responsibility;

“Let it hereby be resolved that the NORTHEAST MICHIGAN COMMUNITY MENTAL HEALTH SERVICES BOARD, as created August 6, 1975 [this is the date of the reorganization] as the public authority for mental health for the counties of Alcona, Alpena, Iosco, Montmorency, Ogemaw, Oscoda and Presque Isle, takes responsibility for all assets and liabilities previously assigned to the Public Act 54 Board and continues all agreements and contracts previously made with the Public Act 54 Board.”

In late 1988, a foundation was formed to allow for the building of an office at 400 Johnson Street. The foundation was needed as the Agency as a Mental Health Organization could not hold real property. The Northeast Community Mental Health Foundation was formed for this purpose. The initial Board members of the Foundation included — William McDonnell, Ralph Mills, Gary Pietsch, Paul Rose and Phil Richards. Construction award was approved for DeVere Construction with a Project Manager of Paul Rose appointed. Bonds were obtained for the dollars to build the facility and once complete, the Agency leased the facility from the Foundation.



In September 29, 1998, under Section 205 of the Mental Health Code, the Board changed the status of the Agency from a Community Mental Health Organization to a Community Mental Health Authority. This entailed a name change from Northeast Michigan Community Mental Health Services to Northeast Michigan Community Mental Health Authority. The following were Board Officers at the time of the change in status:

- Board Officers: Les Buza, Chair
 Bonnie Cross, Vice Chair
 Virginia DeRosia, Secretary
 Elsie Lewis, Treasurer

As an Authority, the Agency was now able to hold property. In February 2002, the Foundation held one of their final meetings in approving a resolution for the Agency to pay off the bond obligations and transfer the property from the Foundation to the Agency. Once this task was complete, the need for the Foundation ceased to exist and on December 11, 2008 the Foundation members met one more time to dissolve the Foundation. Today’s Board of Directors:



Top Row, Left to Right: Robert Adrian, Geyer Balog, Les Buza, Bonnie Cornelius, Roger Frye, Lynnette Grzeskowiak, Judy Jones
 Bottom Row, Left to Right: Terry Larson, Eric Lawson, Gary Nowak, Pat Przeslawski Terry Small

PREVENTION

1985



OUR BEGINNINGS WITH PREVENTION

In 1984, a prevention program project was presented to the Department of Mental Health (now the Department of Health and Human Services) focusing on Children’s Services through a grant request submitted by Ed Barkley (Ed Barkley was the MI Division Director). In April 1985, space was leased from the First Presbyterian Church for the Prevention Program Services. First coordinator for the program was Judy Wienczewski. Joe Manary was later hired in the Prevention program and he coordinated the Rainbow Runaway Program and later worked on collaborative prevention councils. Joe left the Agency in September 2001. The program was later expanded to include infant-parent services. The first Infant Mental Health (IMH) program was established. Greg Proulx was the first supervisor and one-person service provider in the program. In this capacity, Greg’s role was integrated as a

collaboration of several agencies at that time. His office was in the old Health Department and he supervised the Day One staff from Child and Family Services (CHS). Funding was blended from CMH, CFS and DHD #4 and DHS from the four counties we serve in our catchment area.



Judy Wienczewski

In 1999, through Strong Families support, the first Infant Mental Health (IMH) person was hired—Jennifer (Oliver) Stentoumis. At that time Jason Stentoumis, Jennifer’s husband to be, was supervising the Children’s Home Based Program. Joe and Greg provided IMH consulting to NEMCSA, Early Head Start from Cheboygan all the way down to Bay City serving over eight counties. By 2001, the political and financial climate in Michigan eliminated contractual funding for this program and layoffs occurred in the Infant Mental Health program. The program was expanded in 2006, when Jo Mancine was hired for IMH. Children’s Services supervisors included (in addition to Greg): Mike Roth, Jason Stentoumis, Al Drouillard and Lauren Tallant.



Joe Manary



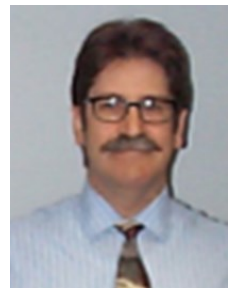
Mike Roth
08/1994—05/2000



Jason Stentoumis
05/2000-06/15/2001



Al Drouillard
06/04/2001-01/05/2008



Greg Proulx PhD
06/17/1994- 11/2014



Lauren Tallant
01/2015 - 08/2021

CHILDREN’S SERVICES

HOME-BASED SERVICES / INTENSIVE FAMILY-BASED SERVICES / INFANT AND EARLY CHILDHOOD SERVICES

The mental health home-based service program is designed to provide intensive services to children (birth through age 17) and their families with multiple service needs who require access to an array of mental health services. The families served usually have problems with normal family functioning, timely-child development, a lack of support systems, and all symptomatic of the focus child’s behavior. Children must meeting diagnostic criteria for a serious emotional disturbance to qualify for services. Criteria for discharge are based on the same assessment scores and descriptions where scores are improved and emotional disturbances are successfully managed. The primary goals of this service is to promote healthy functioning in community, school and home settings; consistent and positive support of staff towards the families they serve and to maintain children in their homes and community settings.

Infant and Early Childhood Services provides intensive in-home services for families with an adult caregiver who has a serious mental illness and who is parenting an infant/toddler. The infant/toddler, with a DSM V diagnosis may also be the primary person served. Focus of this program is developing positive relationships between the parent and infant. Also in this program is “Early Childhood Services) for children 3-6 who are experiencing regulatory disorders or other disruptions in their development. Other facets of this program include consultation and assessment of early childhood programs to include Day One, Early On, Early Head Start and Head Start.

DAY PROGRAMS

[NORTHEAST NO LONGER OPERATES OR PROVIDES SERVICES THROUGH DAY PROGRAMS]

In September 1972, the first Day Program was conducted at Grace Lutheran Church in Alpena with 12 individuals through NEMROC and NMRS (Northeast Michigan Retardation Services) participating. Candy Voight and Cathy Meske staff this program; Candy concentrating on the Alpena County residents and Cathy reaching to the out counties. Homebound individuals received this activity program in their homes as well. Day Programs were instrumental in getting ready for the deinstitutionalization process to assure individuals would have services available when they transitioned to the AIS (Alternative Intermediate Services) homes in the area. The Centers provided the individuals with disabilities opportunities to learn new skills. This service also provided the private adult foster care contractual providers with some respite and made it more enticing to accept the transitioned individuals into their homes.

The Hawks Center in Presque Isle County was the first to be developed, with Centers in the other three counties soon after. The Hawks Center was supervised by Kim Brown, the Alpena Center by Judy Wienczewski (succeeded by Madeline Briggs, Bonnie McLennan and Bill Dashner), Montmorency Center by Karen Carr (Lapczynski) [succeed by Suzanne Goulet and Mark Pollard] and Alcona County by James Spangler. In addition, Day Program services were still provided by NEMROC.

In January 1981, the Board authorized the lease of the Wenzel Land Company building for Montmorency Partial Day Program until the New Montmorency County Day Center was completed with a proposed completion date of July 3, 1981. In late June 1990 the Agency's offices moved from 630 Walnut Street to the current location on Johnson Street.

Evergreen Recycling began as part of the Center program in-house and was later transferred to a private entity under the supervision of Wayne Hewett.

Later, Day Program Services were transitioned to Community Support Services to assure individuals' inclusion in their communities. The Center locations were closed in favor of community integration.



Early offices of NMRS



Wenzel Land Company Building—Hillman



Day Program Area at the Walnut Street Office



Day Program Room at the Johnson Street Office

SUPPORTED INDEPENDENT PROGRAMS

[DEVELOPED TO ENHANCE COMMUNITY LIVING SUPPORT PROGRAMS IN LIEU OF DAY PROGRAMS]

In 1991, records indicate the beginning of the SIP Program for Northeast. The following article appeared in the Agency's newsletter.

"You will come to know how bitter as salt and stone is the bread of others, how hard the way that goes up and down stairs that are never your own." It's a line from Dante's Paradise, but it is also a line from life of every person who has a developmental disability and who has had to live in a house other than his own.

Living in a supervised setting, not one of them could have put all the words together to personally describe what life would be like living independently. Today ask any of the nine participants in the Supported Independence Program and they can tell you in 100 different ways the meaning of living independently and the meaning of home.

Their stories are stories of choice: Apartment or house? Own or rent? By myself or with a friend? And decision-making: Who do I hire to support me? What supports do I most need? Who will I spend my time with? Where will I go? How will I get there? What will I eat? When will I go to bed (or get up)? How will I spend my money? How will I use my time? Their stories are of learning and opportunities:

- * To be a neighbor, to be hospitable
- * To cook venison or bake cookies
- * To be able to give (the cookies) instead of always receiving
- * To bargain shop and to splurge
- * To use a restaurant or the stove at home
- * To shovel my driveway; maybe my neighbor's
- * To decorate my home
- * To make appointments and know what day and time to keep them
- * To grocery shop ("almost by myself")
- * To be safe on the street and at home
- * To get along with friends, house partner and family
- * To talk about what is working well; to change what is not
- * To use my phone even when I "don't know numbers"
- * To pay my bills, to save for a VCR

According to Fran Mattson, SIP Coordinator — Supported Independent Living is "having workers who treat me like an adult"... while I learn to "get along in the community."

In November 1998, Kay Kreft (Keller) was appointed to assist Fran Mattson in this ever-growing program. In June 1999, Bill Dashner was appointed at the SIP Coordinator. Peggy Yachasz followed Bill Dashner and remained in the position until she semi-retired. Karen Grochowski was then appointed to the Coordinator Position.

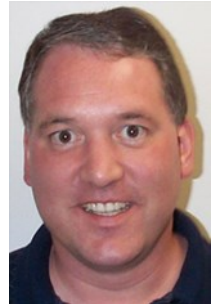
In 2006, the Agency implemented the SIP Emergency Response System which provides monitoring through a telephone connection allowing for greater independence for individuals needing a lesser intensity of support. This system operates 24-hours per day, seven days a week. Monitoring is done through the phone lines or emergency pendants. Individuals are provided face-to-face tech support for such things as medications, blood sugar tests, etc. Non face-to-face contacts include several phone calls as reminders to individuals.

The program has grown and today has 36 individuals in the Supported Independent Program with 29 of those individuals also involved in the SIP Emergency Response System. Today there is a SIP Coordinator, five SIP Supervisors and 42 full- and part-time SIP workers/techs.

Fran Mattson



Bill Dashner



Peggy Yachasz



Karen Grochowski



SIP Emergency Response Monitoring Room

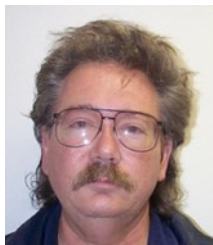
COMMUNITY SUPPORT PROGRAMS

[THIS SERVICE REPLACED THE DAY PROGRAM SERVICES TO PROVIDE INCLUSION FOR INDIVIDUALS]

The DD Community Support Program had its beginning in the mid 90s under the direction of Joel Cooper. This program started slowly with only two Alpena staff, Lance Abbert and



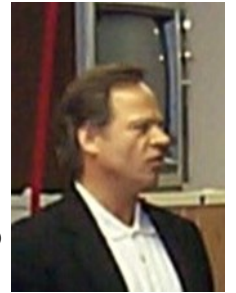
Lance Abbert



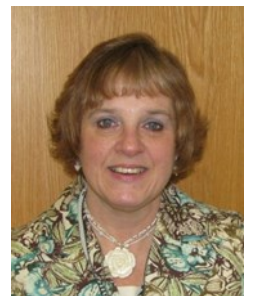
Jim LaCross

Jim LaCross

In 2000, when day programming was being phased out, the Community Support Services (CSS) Program began to grow in leaps and bounds as individuals who were previously going to segregated day programs everyday such as the CMH Day Program and NEMROC started to be transitioned into the CSS program where they would be supported by CSS staff in community-based settings. It was at this time, Maureen Sweet took over as Program Coordinator.



Joel Cooper
Program Coordinator



Maureen Sweet
Program Coordinator

For many years, Community Support and Employment Services worked as a combined program and CSS staff had dual roles of CSS worker and job coach, providing needed support to individuals who held jobs in the community. This changed in 2011 when the decision was made to split Employment and Community Support Services to function independently, each with their own staff due to the fact that as a combined program, it had become too big to effectively maintain.

CSS staff help people with disabilities integrate more fully into their community by helping them engage in activities such as bowling, fishing, camping, going to festivals and fairs, going out to eat in restaurants, playing mini-golf, taking trips to concerts, casinos, out-of-town sporting events such as Detroit Tigers games, water parks, even Mackinac Island — any and all community events and activities that any citizen participates in. They help them find volunteer opportunities if they have



Patti St. John
Retired 2021

an interest in volunteering which helps the individual acquire skills, teaches the importance of punctuality and dependability and helps them feel they are contributing to their community. CSS helps the individual they support increase their safety and social skills and helps them become more independent as they more fully discover and enjoy their community and the opportunities that await them.



Phil Pickard
CSS Supervisor



Jessica Barbeau
Lead CSS Supervisor

This program has expanded greatly and now has 20+ employees. Due to COVID-19 some of the services had to be scaled back to keep within the early “Stay at Home” order and with the highs and lows of COVID comfort levels have not returned to pre-pandemic levels.

The MI Community Living Supports had its beginning in the ACT program and OBRA program. Many of the initial positions were held by peers or casual staff. The staff working in this capacity were supervised by the manager of the program. This program has expanded to provide services in programs such as case management and home-based and children’s services. The CLS staff in this program today total seven.

COMMUNITY EMPLOYMENT

I/DD SERVICES

Community Employment Services assists people to procure and maintain competitive employment in an integrated work setting. Services provided include: job development, job coaching and follow along support. Assistance to develop and maintain a micro-enterprise is another viable option for people to have meaningful work through self-employment. The program works collaboratively with Michigan Rehabilitation Services as well as NEMROC in order to provide employment services tailored to meet each person's needs.

The first job developed in this program was in January 1990 for Sara doing laundry for a beauty salon in Alpena. An Ossineke beauty salon then hired Edith to do their laundry and Joyce worked for a restaurant in Ossineke. Through the years this program grew and many jobs are in place today receiving support from this program.

The first supervisor of this program was Neil McMichael. Neil previously held positions with the Agency at the Montmorency Center and Alpena Center [previous day program options], ACT, and MI and DD Case Management. Neil was instrumental in development of the "ACC-ESS" [Alpena Community College—Employment Support Services] program operated by ACC to provide an array of vocationally-based services. This provided I/DD individuals with an alternative to NEMROC services. The initial ACC-ESS program began October 2, 1995 and provided services to 13 individuals. Inclusion will be a main emphasis in this program.



Neil McMichael
1995—2000



Margie Hale-Manley
06/2000—Present

Through collaborations with various agencies the supported employment program works. The agencies work off the strengths of individuals in developing rewarding opportunities as well as assuring the individual is paid at or above minimum wage.

MI SUPPORTED EMPLOYMENT

EVIDENCE-BASED PRACTICE

The MI Supported Employment program is based on an initiative by the Federal Government through SAM-HSA. The program is evidence-based practice supported employment model that provides supports to adults with mental illness. The program for Northeast began in March 2011. The first offices for this program was shared space with the Bay View Drop In Center at 810 N Second Avenue in Alpena. The program later relocated to the Fletcher Street offices in April 2012. The program began with two staff, Mary Mingus (Jameson) as Coordinator/Supervisor and Steve Gilmore Employment Specialist. The first peer job coach was hired in May 2011. By August 2011, an additional Employment Specialist was hired due to demand. By April 2012, two peer job coaches provided services in this program. The program works with Michigan Rehabilitation Services, AMA-ESD, NEMROC and various other employers in the region.



Sherry Garlanger
05/2019—10/2020



Mary Mingus (Jameson)
03/2011— 2018

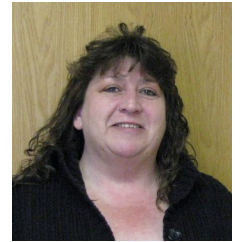
Margie Hale-Manley is still the coordinator of both programs. Staff working in the programs include: Kim Collins, Angela Stawowy, Katelyn Coonrod, Zackeria Miller, Teresa Kowalski, Kelli, Grulke, Melinda Spencer, Bambi Meoak, Stefanie Keller and Brandi Rygwelski.

PEER-DELIVERED SERVICES

Peer-delivered services cover a vast array of services designed and delivered by individuals with “lived experience” in population groups of individuals with mental illness, substance use and intellectual/developmental disabilities. The peers providing the services address unmet needs and focus to address wellness and recovery. The Agency has used peers for many years. One of the early programs utilizing peer-delivered services for the Agency was the “Monday Night Activities” program. Initially volunteers organized activities for the program with input from the individuals participating. This program was for adults with a mental illness. It got its name because the activities were scheduled for Monday evenings. Individuals participating in the program received transportation to and from the activity. The program is social and recreational in nature. Today the program is coordinated by Linda Millard and Julie Jensen.



Linda Millard



Julie Jensen

In 1998, this program had expanded and was outgrowing a manageable amount as a number of individuals with intellectual/developmental disabilities had also started participating in the program. This began the start of the “Tuesday Night Activities Program.” Kim Bednarski (Collins) and Christy Gallagher acted as facilitator in the development of this program. Fran Mattson and Ellen Eagan provided coordination and support as needed. The first Tuesday Night meeting was held on June 30, 1998 at the Trinity Episcopal Church in Alpena. Dues were 50¢ per meeting and activities included bingo, karaoke, attending Brown Trout Festival, touring the Paul Bunyan Amusement Park and many other activities.



Kim Bednarski
(Collins)



Ellen Eagan



Fran Mattson



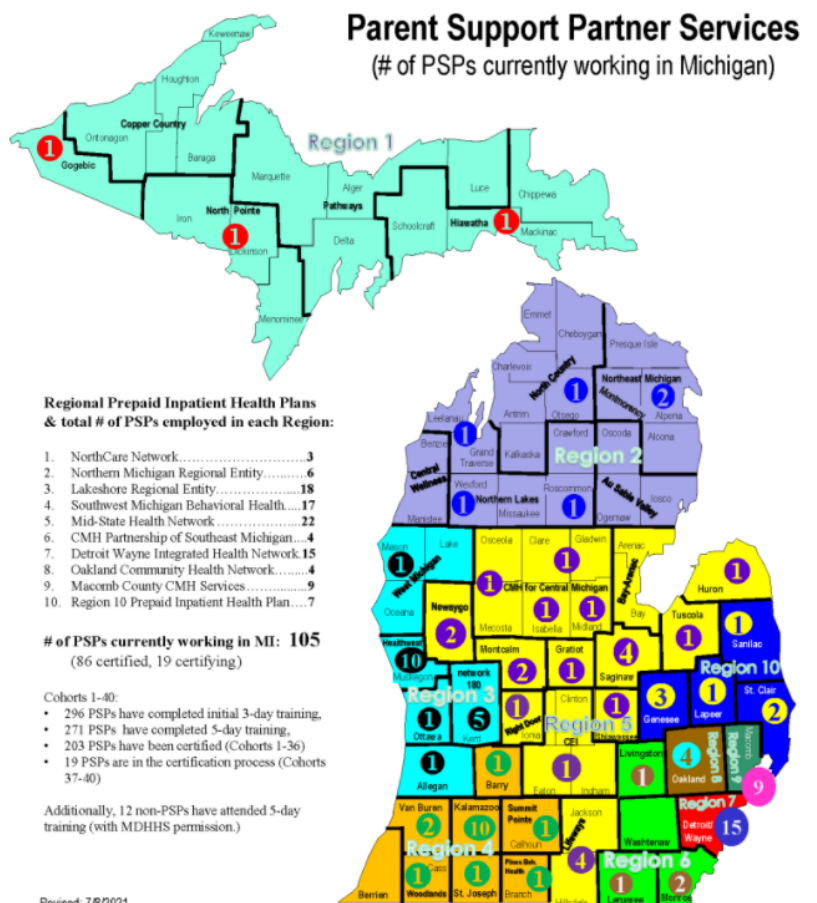
The ACT Program began using peer delivered services in the 90’s and continued until around 2003. The Agency hired their first Peer Support Specialist in July of 2006. Lee Ann Bushey supervises the program and included at one time both Peer Customer Services and Peer Support Specialists. During COVID the Customer Service position was eliminated; however the Peer Support Specialist program staff are going strong. The Peers organize and moderate the WHAM (Whole Health Action Management) group. WHAM is a group designed to take into consideration a person’s whole health condition. It addresses such topics as stress management, healthy eating, physical activity, restful sleep,

service to others, support network, optimism based on positive expectations, cognitive skills to avoid negative thinking, spiritual beliefs and a sense of meaning and purpose. The Peer staff also host a Healing Voices Group, which is an inclusive non-judgmental group to share lived experiences. The group provides opportunities for individuals to participate in a safe group where they can share their experiences and provide support to one another. The target population for this program would be adults with a serious mental illness and those with co-occurring disorders.

The Peer Mentor program provides support services for individuals with an intellectual/developmental disability. This program began in July 2012.

The Peers also played a role in other tasks within the Agency. The Agency used Peer Support Drivers as well as Peer Support Job Coaches.

In addition to the use of Peers in service delivery, our Home-Based Program uses the support of Parent Support Partners. A Parent Support Partner (PSP) service is an intervention that supports families whose children receive services through a community mental health service provider. Michigan’s model for this program is a statewide initiative in partnership with the Michigan Department of Health and Human Services which provides for Medicaid reimbursable peer-to-peer parent support to eligible families as part of Michigan’s Early Periodic Screening Diagnosis and Treatment State Plan. Its purpose is to increase family involvement, increase engagement within the mental health treatment process and equip parents with the skills necessary to address the challenges of raising a youth with special needs



DROP-IN CENTERS

ESTABLISHED 1989

In July 1989, the Department of Mental Health approved the establishment of drop-in centers and Crossroads was opened in Alpena as a drop-in center. A drop-in center is for adults who are or who have been recipients of service of the mental health system. Debbie Grant was the first Director and Joanne Goeke was the Assistant Director. The Center was located at 701 N. Second Avenue in Alpena and was open from 1:00 pm—9:00 pm, seven days a week. The initial attempt at running a drop-in center failed and was closed in 1994.



In June 2010 the idea of a drop-in center was again addressed and the Agency applied for a block grant and the Bay View Center became a reality. JIMHO provided training on establishing a board and running a successful drop-in center to the organizers of the initial peers of the center. NAMI and DBSA

also assisted in bringing this center to fruition. Bay View Center is located at 710 N. Second Avenue — not too far of the original drop-in center. The original Board of the Bay View Center included Allen Macfaldal, Melissa Sherwood, Prudence Arthur, Tim Gray, Roger Boston and Terri Johnson.



The Bay View Center provides a place as structure or as unstructured as the members require. It's a place where the members are accepted, in a world where that has not always been their experi-

ence. Regularly scheduled groups include Arts & Crafts, Quilting & Sewing, Weight Loss, Writer's Group and Newsletter group as well as several Wellness groups.

CLUBHOUSE

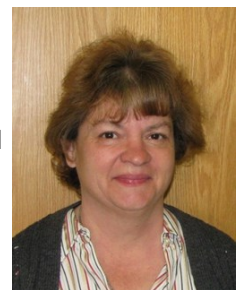
ESTABLISHED 1994

In the winter/spring of 1994, staff member Gary Jarmuszewski made a circuit of visiting clubhouses around the state to determine feasibility of providing this type of program locally. In the fall of that year, Gary was tasked with the challenge of finding a suitable location to host the program. The Clubhouse Program requires staff to attend specific training and Gary attends training in Greenville, South Carolina on the Clubhouse model. He then finds a suitable building located at 228 S. 3rd Avenue and renovations on the building begin. In April 1995 the Clubhouse opens with about 10-15 members. Over the years the members have increased. During the time the Agency directly operated the Clubhouse, it was staffed with four employees— one supervisor, one vocational coordinator and two unit leaders [one focusing on the kitchen unit and one focusing on the clerical unit].



Gary Jarmuszewski
Clubhouse Supervisor

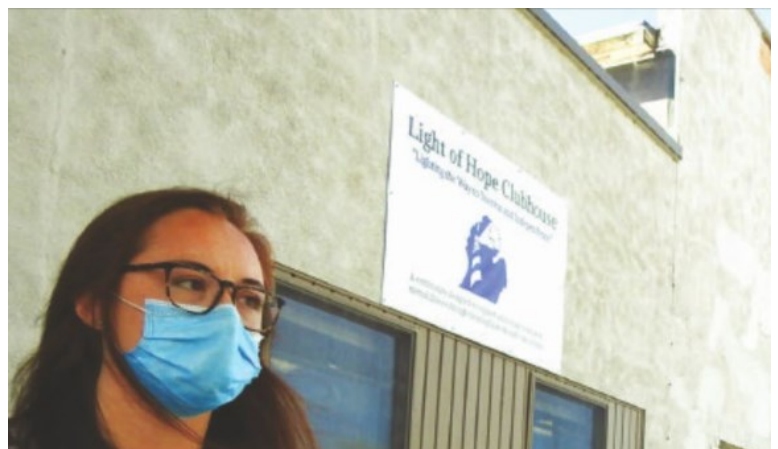
Clubhouse members have options to learn vocational skills such as reception/clerical, kitchen/food service, concession/retail and janitorial services. Members also participate in social and recreational activities which include camping, fishing, shopping, concerts, riverboats, site seeing trips, movies and many other activities. Gary retired on June 5, 2014. After Gary's retirement, Mary Mingus (Jameson) split her time between the Supported Employment Program and Clubhouse Supervisor.



Mary Mingus
(Jameson)

In 2018, the Agency issued an RFP for the provision of Psychosocial Rehabilitation Clubhouse Management of Program with a targeted operational date of January 1, 2019. A bidder's conference was held on August 27, 2018 with two interested parties attending — Hope Network and Touchstone Services. Touchstone Services was awarded the bid and services began under their leadership in January 2019. By the end of 2019, Touchstone had achieved Clubhouse International Accreditation. Abbey Podbielski is the current Director of the Light of Hope Clubhouse. During the pandemic, staff were very creative in the delivery of services while maintaining the mandates of the "Stay Home" order and other social distancing mandates.

In early June of this year members were able to congregate at the facility again and return to a somewhat normal scheduled routine.



1988—Approved to develop an ACT program

[Assertive Community Treatment]



Far left: First office 200 E Chisholm (behind the present day Gliks)

Bottom left: Second office 113 S. State Street

Bottom right: Third office 1001 W. Washington Ave. (present day Devere Industrial LLC)

Far right: Final location—move in day at 400 Johnson St



The first ACT Team included: Cathy Meske [supervisor], Jackie Whiteman [clerical support], and clinical staff Neil McMichael, Mel Straley and Carol Welker. ACT services were provided to those individuals being transitioned back to the community from state institutions such as Traverse City Regional Psychiatric Hospital. The program operated seven days a week, requiring staff to work weekends. Later, the weekend duty went to an on-call system with staff rotating those duties.

Supervisors to the program included:



Cathy Meske
12/1988—07/1994



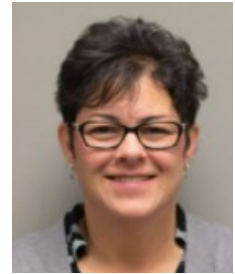
John Bonifas
1994-03/2005



Pat Mullen
02/2005—03/2012



Marie Mattson
03/2012-03/2017



Vicki Knoczak Miltz
03/2017-05/2018



Mary Jameson
09/2018-07/2019



Kamara Marsh
07/2019—08/2019



Barbara Olsen
11/2019—05/2020



Michelle Knoch
08/2020—Present

In addition, ACT had some temporary supervisors, which included JoAnn James-Schalk, Dave Misel and Lisa Orozco.

Children's ACT Program

May 1992



CHILDREN'S SERVICES ACT

In May 1992, there were programmatic changes made at the Agency. A Children's ACT Program was put in place. Brian Clark was appointed Supervisor of the new program. Robert Taylor, who worked previously as a Ripley RTF worker was promoted to an ACT Worker. Dorothy Cross was hired to work in this department as well. This program later evolved into Home-Based Services which is detailed more under the prevention portion of this newsletter.



Robert Taylor



Dorothy Cross

SPECIALIZED TREATMENT FOR OFFENDERS PROGRAM

JOINT EFFORT BETWEEN 26TH JUDICIAL COURT AND THE AGENCY

ESTABLISHED AROUND 1994

What is S.T.O.P.? STOP is an acronym for Specialized Treatment for Offenders Program. It was a joint effort between the 26th Judicial Circuit Court and Community Mental Health. It was a community-based intervention effort to provide treatment and reduce recidivism of low risk sexual offenders. It was funded by the State of Michigan Community Corrections Department. Ed Barkley PhD was the Program Director. Over the course of the program he had assistance from Pamela L'Adnier (family therapist), Joyell Nezich and Donna Mullen.. Pam, Joyell and Donna served as co-therapist for in-jail and outpatient group therapy.

Referrals to the program were screened by the probation/parole prosecutor, court staff and the defense attorney. The court would order an assessment by CMH for determination of eligibility for treatment. The recommendation was then sent to the court and was used to determine sentencing.

The intent of the program was to provide local treatment with jail and probation time rather than send low risk sex offenders to the prison system where they were likely not to receive any treatment and would return to the community (and likely reoffend).. Participants in the program generally stayed with the program for five years with the first year being served in the Alpena County jail. The remaining time was served on probation (sometimes with electronic tether) with outpatient treatment and whatever stipulations necessary for therapeutic compliance. The program was designed to include a female co-therapist and included considerable flexibility to address each offender's and family's needs. Group therapy was the primary treatment modality.

The funding for this program transitioned to the court system in 2005 with Ed Barkley retiring from this Agency on April 29, 2005.



Ed Barkley



Joyell Nezich

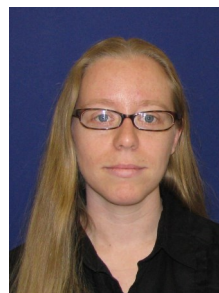


Donna Mullen

BEHAVIORAL HEALTH TREATMENT SERVICES

AUTISM SERVICES

The Michigan Department of Health and Human Services (MDHHS) established the Michigan Autism Program in 2013 as part of the Behavioral Health and Developmental Disabilities Administration. The Agency established Behavioral Health Treatment (BHT) services at that time focusing on prevention of the progression of Autism Spectrum Disorder (ASD). Medical necessity and recommendations for BHT services is determined by a physician or other licensed practitioners working within their scope of practice under state law. Direct patient care services that prevent the regression or address ASD under the state plan are available for children under 21 years of age. The first supervisor of the program was Stephanie Davis and led the program from April 2013 until her resignation in June 2016. Amanda Sola was appointed to succeed Stephanie and held the position until August 7, 2020. Due to the difficulty in recruiting staff, providing training requirements only to have them leave the Agency a decision was made to contract out the service at that point. The Agency employs two staff who work closely with the contract agencies in the provision of services.



Top Row, Left to Right: Stephanie Davis, Amanda Sola



Bottom Row, Left to Right: Astrid Fitzpatrick (ABA Clinician), Jill Dickins (ABA Case Manager)

RESIDENTIAL PROGRAM

I/DD SERVICES

The residential program began for Northeast in the early 1980s. During the deinstitutionalization movement, Northeast was able to return 24 individuals with disabilities to their community from the institutions. In addition, Northeast developed a residential program that allowed other counties to transfer their individuals (and their funding) to Northeast. This added upward of 150 more individuals to the residential program.

The state issued guidelines to be used in the construction of the group homes and, in all, 22 homes were opened in the four-county area; most of them new construction made possible by various investors. This provided a boost to the communities with employment opportunities in a variety of fields along with providing local commerce for needed ongoing resources.

Some time after the institutions were closed, the residential program began to shrink due to mortality of the residents. It is important to note many of the individuals residing in our program lived longer than institutional statistics as they received more personal attention to their medical needs. This program continues to shrink as individuals are transitioned into less restrictive environments and are supported under the Supported Independence Program. Today, there are nine homes still in operation.

The one home established for individuals with a mental illness has closed and other services are provided to keep the individuals in their own homes versus a group home setting.

Initially, the majority of the group homes developed consisted of eight beds. This has since been reduced to six beds. The homes are very well decorated and create a family environment for the residents. As community services expanded, opportunities for the residents to become more independent arose. As able, residents moved to less restrictive settings to include their own apartments, own homes or back with families.

Today, the transition to supported independence continues. A monitoring system is in place for individuals needing that level of service. The Person-Centered Planning Process is used to evaluate the needs of the individuals annually.

Satisfaction survey conducted with this population group have always received great response and positive reviews.

Home Development...

On April 15, 1980 the Board held an Open House at the Cambridge AIS home in anticipation of their opening the following day. Cambridge was the first directly operated home for this Agency. Dick and Cathy Spencer owned the home built by local contractor Mark Skiba. The State of Michigan leased the home from the Spencers. In 1999, the lease was transferred from the State to the Agency. When the Agency became an Authority, the Board was able to hold property. The Cambridge Home was purchased from the Spencers in 2003.

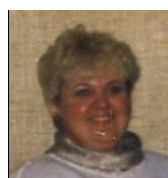
The supervision of the Cambridge home fell on various hands. Home Supervisors included: 1) Jo McLain, 2) Bobbie VanLew, 3) Adele Moore, 4) Mary Ellen Hoppe, 5) Tina Hunt and 6) Kathy Wojda. Can you recognize some of them?



Bobbi VanLew



Adele Moore



Mary Ellen Hoppe



Tina Hunt



Kathy Wojda



Cambridge Group Home
Established April 1980
Still in Operation



RESIDENTIAL PROGRAM

I/DD SERVICES

On May 19, 1980 the Pinecrest Home opened. This home opened initially focused on service to children. In 1986, it converted to providing services to adults. In May of 1999, the owner of the Pinecrest Home notified the Board the home had been sold and the new owner was not planning to continue in a rental arrangement with the Agency. The search was on and the Princeton Home was purchased as a replacement. The Princeton Home was purchased in December 2000 with renovations to be done and open for residency in September 2001. Home Supervisors at the Pinecrest/Princeton Home included: Ruth Textor (1980-1989), Bonnie Benac, Barb Ludwiczak, Lorna Litzner, Cindy LaMay, Angela Iwema and Cheryl Romel. Pinecrest had two foster grandmothers working with the children, Sarah Millard and Eva Basch from 1981 to at least 1987.



Ruth Textor



Barb Ludwiczak



Lorna Litzner



Cindy LaMay



Angela Iwema

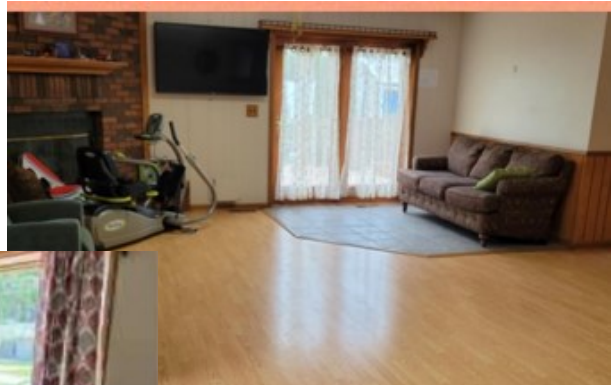


Cheryl Romel



Princeton Home
Established: September 2001
Replaced: Pinecrest Home
Pinecrest Established: May 1980
Closed: September 2001

The Princeton Home just underwent some major renovation to make the home more accessible for the wheelchair residents in the home. During the construction phase, the Besser Senior Living facility was gracious enough to house our residents and our staff were able to continue to provide services at the facility. Below are some of the pictures of the new renovation.



In November 1980, several additional homes were opened in the four-county area. Avalon, Lewiston, Orchard View and Thunder Bay opened in Montmorency county, Brege opened in Presque Isle and Walnut opened in Alpena county. Two of the five homes opened in November 1980 are still open today — Thunder Bay and Walnut.

The Avalon home closed in March of 2014; the Orchard View home closed March 2010 and the Lewiston home closed twice — first in April 1998. It reopened in August 2000 and closed a second time in March 2005.

RESIDENTIAL PROGRAM

I/DD SERVICES

The lease for Avalon home located in Montmorency County was signed in November 1980. The first supervisor of the home was Tony Cucuzza followed by Susan Kennard who held the position until September 2, 1988. She was followed by Brenda Wozniak, Beth Noffze, Candice Moore, Debbie Siebel, and Rhonda Fletcher. Rhonda was the supervisor in place when the home closed in March 2014.



Avalon Home
Established: November 1980
Closed: March 2014



Brenda Wozniak



Candace Moore



Debbie Siebel



Rhonda Fletcher

The lease for the Lewiston (Hofstra) home located in Montmorency County was signed in November 1980. When homes opened during this period it was not uncommon for one supervisor to be in charge of two homes. In the case of Lewiston, Roy "Pat" Griffith provided these services for the Lewiston home and the Pine Park home. The Lewiston home operated from November 1980 until April 1988 and then again in August 2000 until March 2005. The second opening was to accommodate the residents from the Kohlman home as the home was sold.



Lewiston/Hofstra Home
Operated: November 1980—April 1988
Operated: 2000 - 2005



Harriett Hubert



Cindy Foley



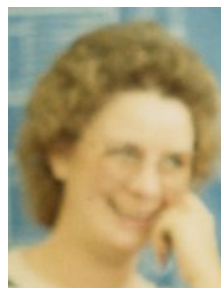
Rhonda Fletcher

Supervisors over this home during the first period also included Harriett Hubert and Cindy Foley. When the home reopened in 2000, Rhonda Fletcher was the home supervisor and remained in that position until the home closed in 2005.

The lease for the Orchard View home located in Montmorency County was signed in November 1980. Tony Cucuzza and Denise Marquardt were the first supervisors at this location. Denise was followed by Peggy Yachasz, JoAnne Degen, Judy Benac, Heidi Kissane and Amy Cumper. This home closed in March 2010.



Orchard View Home
Opened: November 1980
Closed: March 2010



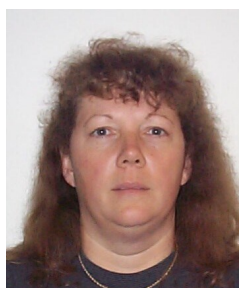
Denise Marquardt



Peggy Yachasz



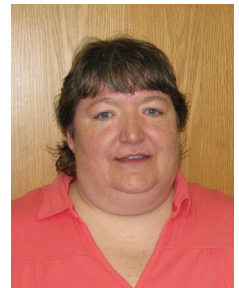
JoAnne Degen



Judy Benac



Heidi Kissane



Amy Cumper

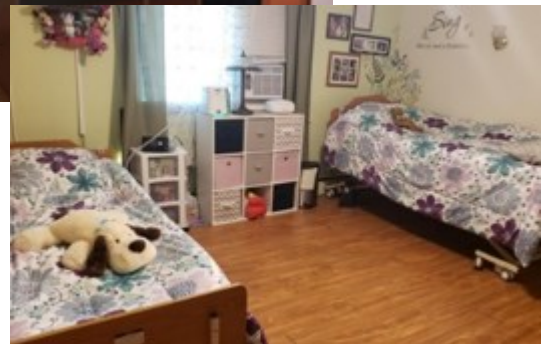
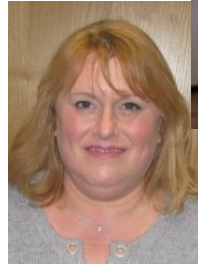
RESIDENTIAL PROGRAM

I/DD SERVICES

The fourth home opened in November 1980 was the Thunder Bay home located in Montmorency County. In 1985 this home transitioned into a home for the older I/DD population. Harry Rice and Bonnie Benac were early home supervisors with Regina (Connor) Briley taking over in September 1990. Supervisors following include: Marianne Yakes, Lorna Litzner, Dave Shadbolt, Rhonda Fletcher and our current supervisor Amy Maynard.



Left: Bonnie Benac
Right: Marianne Yakes
Bottom (from left):
Lorna Litzner
Dave Shadbolt;
Rhonda Fletcher
Amy Maynard



The Walnut home located in Alpena County was also opened in November 1980. Residents began arriving in January 1981. This home was originally owned by the Northeast Michigan Mental Health Centers, which was dissolved when this Agency began providing the services directly. The ownership of the home was transferred to the Northeast Michigan Community Foundation as this Agency was not able to own real estate. In October 1997, the Board approved the purchase of the home from the Community Foundation of Northeast Michigan for \$65,000. It took until September 1998 to get all the loan documents and proper paperwork executed. The home total was actually \$72,000.

Roberta "Bobbi" VanLew was the first home supervisor of the Walnut home. She retired in March 1998. Kay Kreft (Keller) assumed the supervision of this home, followed by Norma Anderson, Karen Grochowski, Kim Timmreck and Heidi Kissane.



Bobbi VanLew



Kay Kreft (Keller)



Norma Anderson



Karen Grochowski



Kim Timmreck



Heidi Kissane



RESIDENTIAL PROGRAM

I/DD SERVICES

The Brege home located in Presque Isle County opened in November 1980 under the supervision of Linda Berry. The home was licensed for six beds. Linda initially provided supervision for two homes — Brege and Grand Lake. Linda left the area and was replaced in August 1981 with Mary Trombly. Mary was only a supervisor for a very short time and Linda DeKett (DePaulis, DeRoque) was named supervisor in November 1981 providing supervisory duties to both Brege and Deerfield home. In February 1986, the Board approved the staffing of one supervisor per home versus a two-point supervision. Linda DeKett stayed with the Deerfield home and Linda Kleiber was promoted to supervise the Brege home in May 1986. Linda Kleiber left the Agency in July 1995 and was replaced by Kay Wyman (Kreft, Keller) who supervised the home from June 1995 until August 1996. She was succeeded by Kathy Kaszubowski. Ann Bisson stepped in when Kathy went out on medical leave and was made supervisor in December 2006. Amy Cumper replaced Ann in April 2010 and was later replaced with the current supervisor, Ann Smith in April 2015.



Linda DeKett



Linda Kleiber



Kay Wyman



Kathy Kaszubowski



Ann Bisson



Amy Cumper



Ann Smith

The Grand Lake Group Home opened in May 1981 with occupancy beginning in July 1981. The home was located in Presque Isle County. The first home supervisor for the home was Linda Berry. Many supervisors had a hand in managing this home and include: Ruth Textor, Lorna Litzner, Colleen Wisniewski, Kim Yarch, Mike Nordstrand and Delores Wojcicki. As the need for fewer group homes diminished, this home was targeted for closure due to the difficulty in staff recruitment. The doors of this home were locked for the final time on October 13, 1995 with residents of the home being transferred to Walnut, Stoneyridge, Deerfield, Thunder Bay and one to a foster care home. The home supervisor at the time, Delores Wojcicki was transferred to the Dewar Home.

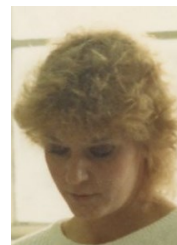


Grand Lake Group Home

Established: May 1981

Closed: October 1995

Left to Right: Ruth Textor, Lorna Litzner, Colleen Wisniewski, Kim Yarch



RESIDENTIAL PROGRAM

I/DD SERVICES

The Barlow Home was established in June 1981 in Alcona County and in operation for approximately 14 years. Sandy Krueger was home supervisor for the Barlow Home as well as the Dewar Home until she left the Agency for a new venture through NEMROC as a Work Activity Center Coordinator in December 1986. Bob Reynolds "Barlow Bob" was the home supervisor since December 1987. This home closed in June 1995. Bob transferred to the Harrisville Home at that time.



Sandra Krueger



Bob Reynolds



Barlow Group Home
Established: June 1981
Closed: June 1995

The Stoneyridge home opened in July 1981. Bonnie Benac was the first home supervisor of this home, holding that position until January 5, 1983. Lorna Litzner and Deborah Siebel followed as home supervisors. Debbie was the home supervisor when this home was closed in 2004.



No Picture Available
Home Opened: July 1981
Home Closed: September 2004

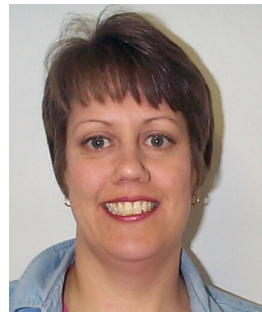


Deerfield Group Home
Established: July 1982
Closed: November 2011

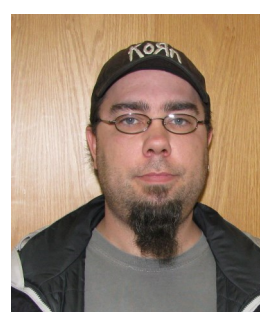
The Deerfield Home located at 3892 Wirgau Rd., Rogers City was opened in July 1982. Linda DeKett was the first home supervisor for this location. Elizabeth LaLonde (Geyer) was promoted to the home supervisor position October 1988. She served that position until she relocated from the area. David Shadbolt assumed the position at that time and remained in that position until the home closed in November 2011.



Linda DeKett



Elizabeth (LaLonde) Geyer

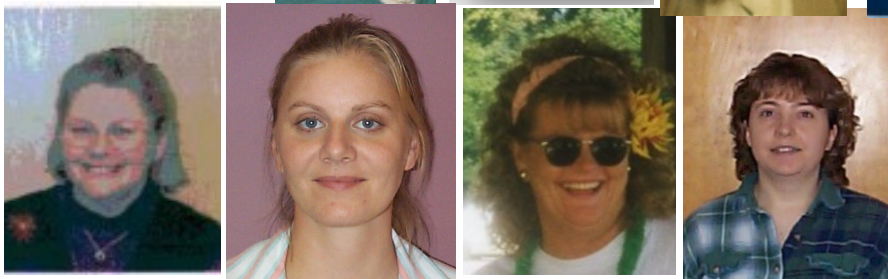


Dave Shadbolt

RESIDENTIAL PROGRAM

I/DD SERVICES

The Dewar Home in Alcona County was the next to open in August of 1981. From records I could find, it appears Sandra Krueger was the first home supervisor with Marty (Wilson) Slater Gates following her. Marty later took the position of Home Supervisor at the Harrisville Home when that home opened in September 1988. Julie Spangler was the Home Supervisor from September 1988 until October 1990. In October 1990, Jim Spangler transferred from supervisor of the Partial Day Program in Alcona County to the Home Supervisor. Succeeding Jim Spangler was Karen Grochowski, Antonina Nickowski, Geraldine LaCross, Loretta Whitscell, Marianne Yakes, Delores Wojcicki, Heidi Kissane, Theresa Talbot and Mellisa Hall. The Dewar Home closed in September 2015.

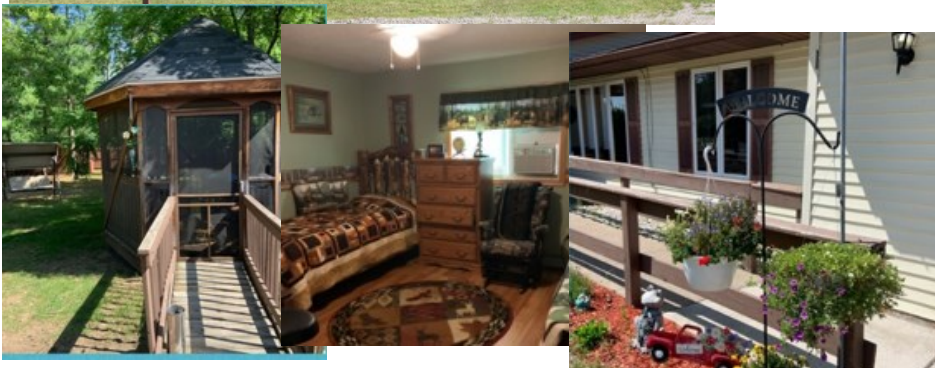


Top Row, Left to Right: Sandra Krueger, Marty Slater Gates, Julie Spangler, Karen Grochowski, Gerri LaCross, Loretta Whitscell

Bottom Row, Left to Right: Marianne Yakes, Heidi Kissane, Theresa Talbot, Missy Hall



The Pine Park home in Montmorency County opened in November 1981. The first Home Supervisor was Roy "Pat" Griffith. He began in August to get the home ready for occupancy. Mr. Griffith left the Agency in June 1985. Harriett Hubert was appointed Home supervisor for a short period of time, until December 1, 1985. Virginia Irons agreed to become Home Supervisor upon Harriett's resignation in December 1985. She remained in that position until December 1995. Cindy Foley absorbed the Home Supervisor position along with the Lewiston Home until June of 1996 when Lois Cumper was promoted to the Home Supervisor Position. When Lois was out on medical leave, Kathy Wojda was appointed as a temporary supervisor of the home. Kathy later transferred to the Cambridge Home and Denise Safford was appointed to the position of permanent Home Supervisor.



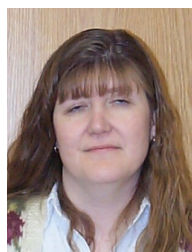
Harriett Hubert



Virginia Irons



Cindy Foley



Lois Cumper



Kathy Wojda



Denise Safford

RESIDENTIAL PROGRAM

I/DD SERVICES

The Kohlman Home opened as a CLF (Community Living Facility) in 1984 and was supervised by a husband/wife duo, Tom and Sally Wineman. In January 1987, the operation of this home was transitioned into a Home Supervisor run model. The first Home Supervisor of this home was Millie Goossens. She ran the home until July 1993 when she left the Agency for another position. Candace Moore was promoted to Home Supervisor July 29, 1993 and remained in that position until April 24, 2000. JoAnne Degen was appointed to fill the vacancy Candace left and she was the Home Supervisor until July of 2000 when she transferred to supervise the Orchard View Home. Rhonda Fletcher filled the vacancy until the home closed in August 2000.



Millie Goossens



Candace Moore



JoAnne Degen



Rhonda Fletcher

The Highland Court Home in Alpena also opened in 1984. This may have been another home initially run by a married couple. The first Home Supervisor I could identify was Colleen Wisniewski from October 1987 to December 1, 1989. Sue Dehring succeeded Colleen and stayed until July 14, 1995. Karen Grochowski then transferred to this home as Home Supervisor and stayed for one year leaving in July 1996. Kay Kreft (Keller) was appointed to the supervisor positions from July 29, 1996 until April 6, 1998 when she transferred to the Walnut Group Home as supervisor. Karen Grochowski was rehired to the supervisor position at Highland Court in April 1998. This home closed in October 1998.



Picture Not Available

Established 1984 — Closed December 2000



Colleen Wisniewski



Karen Grochowski



Kay Kreft (Keller)

The Krueger Home opened in December 1987 as a CLF home. The husband and wife team of Tom and Carol Tessmer managed the home initially. The first home supervisor I could identify was Gerry LaCross and she held this role until July 1992. Karen Grochowski was the home supervisor from July 9, 1992 until July 3, 1995. Lorell Whitscell held the position from July 24, 1995 until January 22, 1999. Heidi Kissane was the last supervisor, appointed January 23, 1999 and held the position until the home closed in June 2004.



Gerry LaCross



Karen Grochowski



Lorell Whitscell



Heidi Kissane

Krueger Group Home
Established: December 1987
Closed: June 2004

RESIDENTIAL PROGRAM

I/DD SERVICES

The Harrisville Home was opened in October 1988 after a difficult negotiation with the Alcona County Commissioners. The Commissioners were reluctant to have such a home opened in their town and opposed the opening of the Harrisville Home and Mill Creek Home. The Harrisville Home is a leased home from DWT Enterprises, LLC. Initially the State of Michigan held the leases on the group homes. On September 27, 1996 the lease transferred from the State of Michigan to Northeast. Martha Slater-Gates was the first home supervisor transferring from the Dewar Home. When she left the Agency on July 21, 1995, Bob Reynolds was appointed the supervisor. Bob transferred to the Harrisville Home upon the closure of the Barlow Road Home July 1, 1995.

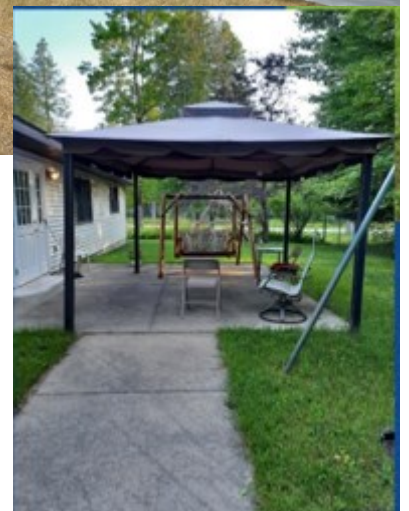


Marty Slater-Gates

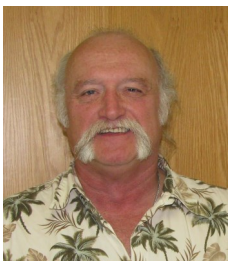


Bob Reynolds

The Mill Creek Home opened in December 1988. The first Home Supervisor for this location was Sue Kortman. The home was opened and ready to welcome five new residents [who arrived from state institutions] just in time for Christmas. Sue Kortman resigned as Home Supervisor and Cindy LaMay was chosen to fill the position. Cindy remained at Mill Creek as the Home Supervisor until July 2000 when Dave Talbot took over the reins. When Dave retired, Dave Shadbolt took over for a short time followed by Karen Grochowski, Julie Matthews and Cindy Fields.



Cindy LaMay



Dave Talbot



Dave Shadbolt



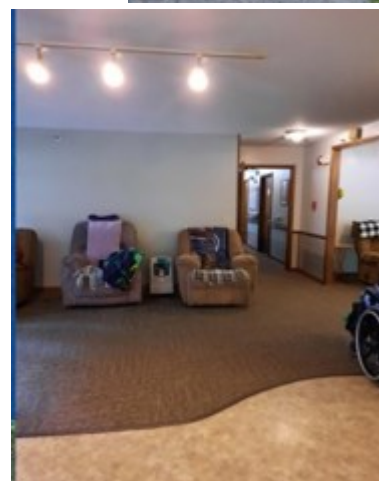
Karen Grochowski



Julie Matthews



Cindy Fields



RESIDENTIAL PROGRAM

I/DD SERVICES

In November 1974, NMRS (Northeast Michigan Retardation Services) applied for a MSHDA sponsored group home. The home opened in 1978. In February 1984, a special meeting was held to discuss a proposal for the Northeast Board to serve as the managing agent of the Blue Horizons Home. Gerald VanLew and Virginia Hawkins were charter members of the Blue Horizons Board at the time the grant was written. Initially, the Blue Horizons Board contracted with Child & Family Services for the management of the home. Brenda Roberts was the Director of the Blue Horizons Home through the initial arrangement. The transfer of management was targeted for April 1, 1984. Fran Mattson was the first Northeast Home Supervisor for this property. In August 1990, she transferred to the position of Supported Independent Living Coordinator and Renee Smart-Sheppler became the Home Supervisor. Renee left the position to take a part-time position within the Agency as a SIS Assessor. Amy Thompson was promoted to the Home Supervisor position transferring from a SIP Supervisor position in Janu-



Fran Mattson



Renee Smart-Sheppler



Amy Thompson

RESIDENTIAL PROGRAM

MI SERVICES

With the State institutions closing, there was also a need to have residential setting for individuals with a mental illness. In July 1980, the Northeast Board supported a lease with the Besser Foundation for the establishment of this facility located at 409 Ripley Boulevard in Alpena. An Open House was held on October 17, 1980 with residents arriving the week of October 20th. Steve Larsen was the first supervisor of the program referred to as Partial Hospitalization & Aftercare—Residential Treatment Facility. John Oliver was appointed Home Supervisor in August 1982. The Besser Foundation, in 1988, sold the property to Frank Romanik. In April 2002, John Oliver transitioned to Supervisor of the Community Living Skills program and JoAnne Dice (James-Schalk) was appointed Home Supervisor. In August 2007, JoAnne James-Schalk held a role as a temporary ACT Supervisor and Steve Gilmore was made temporary Home Supervisor of Second Avenue.



The facility located at 919 N Second Avenue was purchased to replace the Ripley Street Facility in 2017. On March 30, 2004 the facility at Second Avenue was open to receive residents. In January 2008, the Agency focused their efforts to supporting individuals in their own homes versus having this facility. The Second Avenue home was converted into temporary office space until the Fletcher Street Office was refurbished to accommodate staff. This home then became a transitional home for individuals to move from a semi-supported residential environment to a more self-supported environment. The Agency sold the home in September 2017 to Beacon Specialized Living Services.



John Oliver



JoAnne James-Schalk



Steve Gilmore

FACES KNOWN/UNKNOWN

DO YOU RECOGNIZE THESE INDIVIDUALS????

